

**#IntoYourFuture**



**TELLUR**

**#FollowTellur**

# WiFi AC Plug

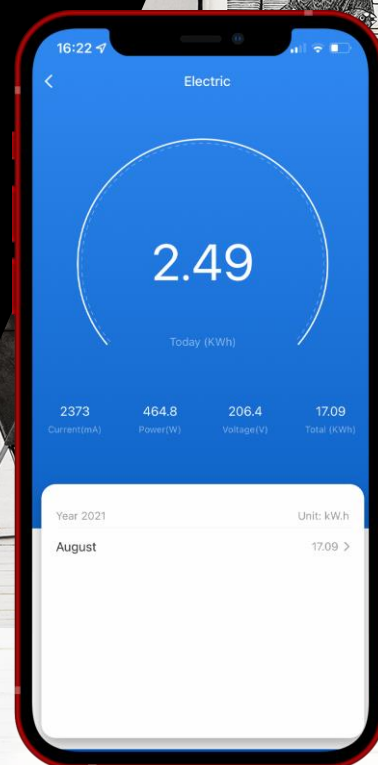


- ☐ Remote control
- ☐ Energy monitoring
- ☐ Voice control
- ☐ Powerful

# Smart Energy

Simple, but yet smart!

The WiFi Wall Plug can be easily installed and used with the Tellur Smart app.



Siri



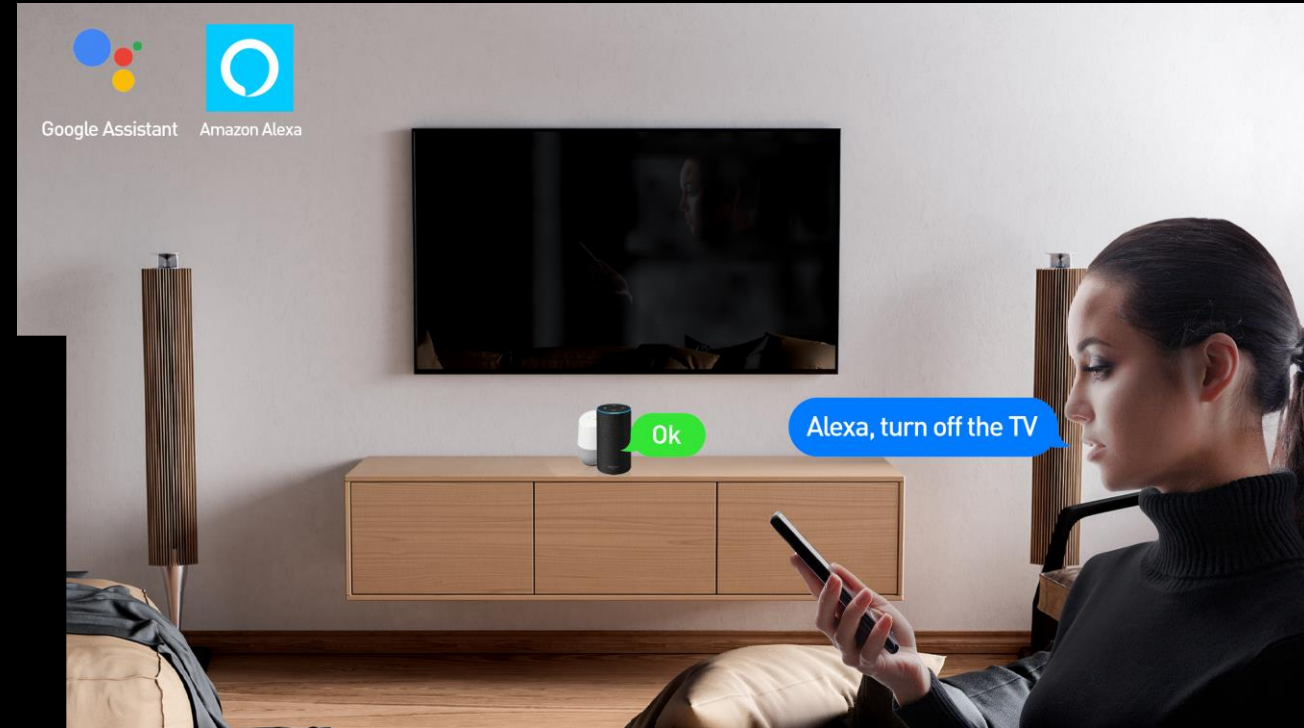
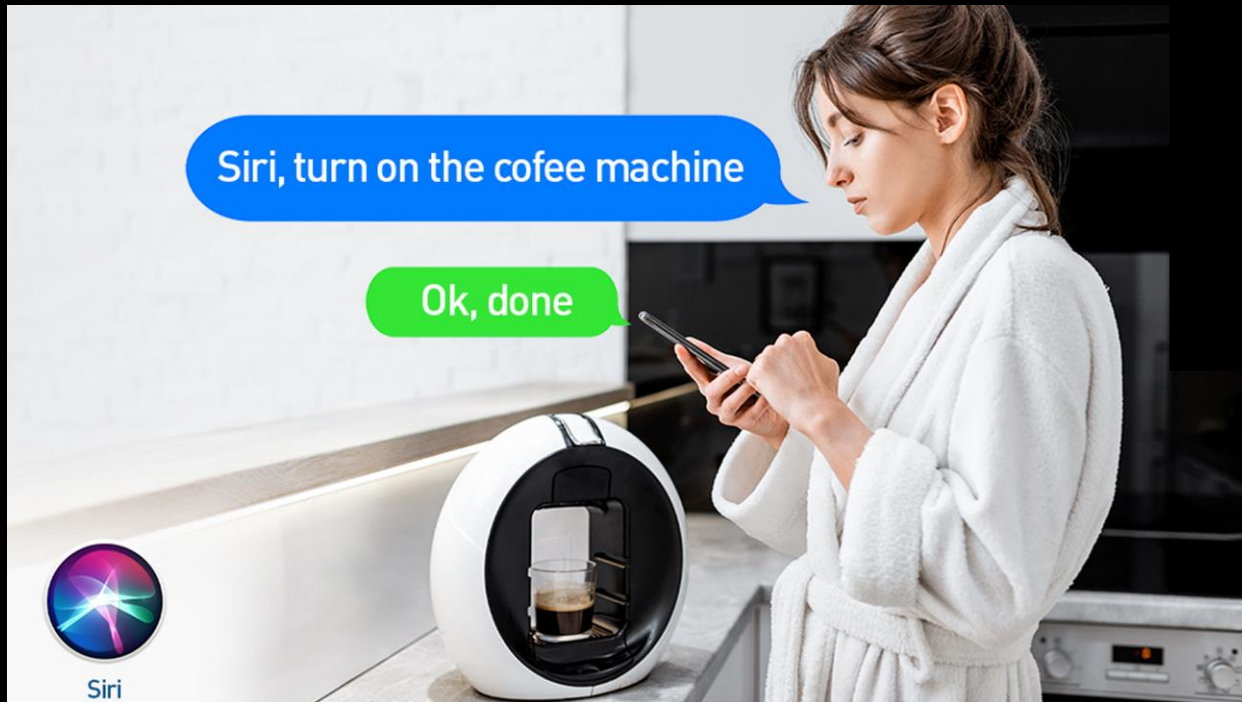
Amazon  
Alexa



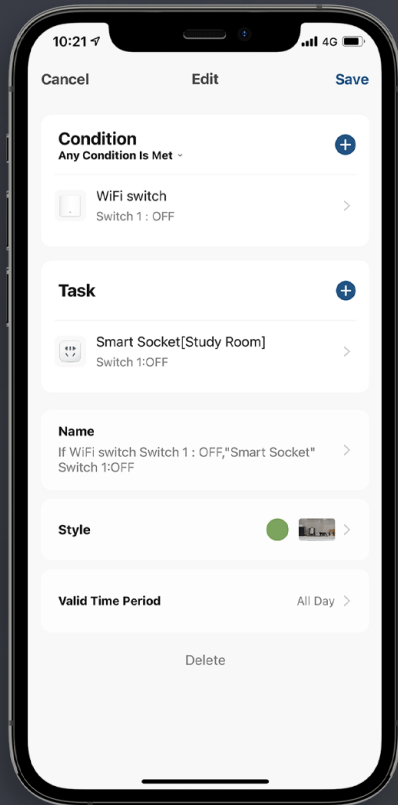
Google  
Assistant



The device can be easily  
controlled by simply using voice



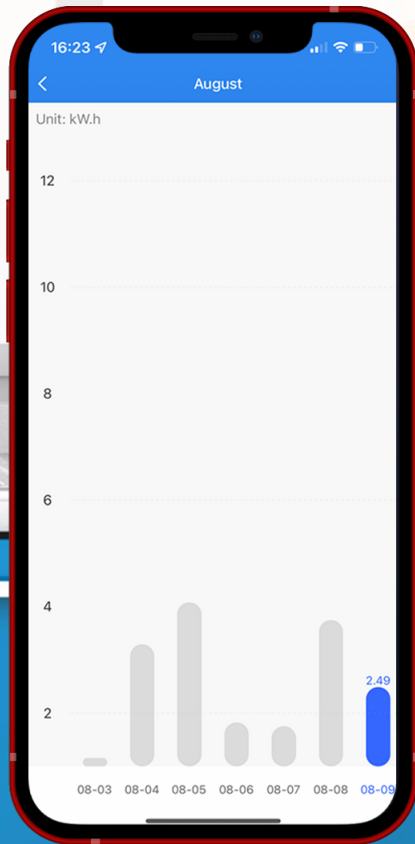
# Automation and Smart scenario



Use all the integrated  
smart functions the plug  
being fully customizable  
using only your  
smartphone.

# Power consumption monitoring

Offering power consumption monitoring, the WiFi AC Plug can help you save energy and cut back on your electrical bill.





# Time Settings

Set timers and schedules



# Remote Control

Moreover, it can be remotely controlled anytime, from anywhere through the Tellur Smart app.





# Safety

Thanks to its integrated overload protection function, it keeps devices safe by switching off the power supply when a connected electrical device is overloaded in order to protect it.



Technical specs	
Outlet type:	Schuko
Voltage:	AC 100-230V
Maximum load:	16A
Max power:	3680W
Energy Consumption Monitoring:	Yes
Overload protection:	Yes
Amazon Alexa:	Yes, compatible
Google Assistant:	Yes, compatible
Wireless frequency:	2.4GHz
WiFi standard:	IEEE 802.11b/g/n
Security:	WPA-PSK/ WPA2-PSK /WPA/WPA2/WEP/WPS2/WAPI
Encryption type:	WEP/TKIP/AES
Standby consumption:	0.3W
Compatibility:	Devices with Android 4.2 / iOS 8 or more recently
Working temperature:	-20~45° C
Working Humidity:	≤80%
Package includes:	WiFi AC Plug User Manual
Product dimensions:	50 x 50 x 84mm
Product weight:	80gr
Package dimensions:	70 x 55 x 85mm
Package weight:	107 gr
Product code:	TLL331311
EAN:	5949120003513



# THANK YOU!

For more information, please visit  
[smart.tellur.com](http://smart.tellur.com).

