

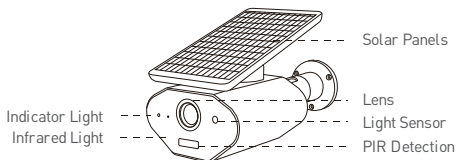


WiFi Smart Solar Camera

User guide

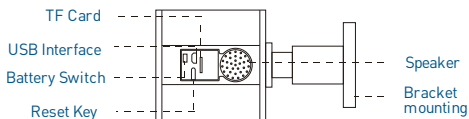
INTO YOUR FUTURE

Product description



Name Description

Solar Panels	When the sun is strong, that can charge the device battery.
Infrared Light	When the ambient light is not enough, enable the infrared light to increase the brightness of the environment.
Light Sensor	Used to collect ambient brightness values, when the illumination is lower than 2Lux, enable the infrared light.
Pickup Device	Collect ambient sounds and implement voice intercom.
PIR Detection	When the human body moves in front of the device, it can generate a trigger signal to the mobile phone.
Lens	Capture image video. Red light flashes slowly: the system waits in the WiFi configuration. The blue light is slow: the system is in normal working condition. Red and blue flashing alternately: system WiFi connection failed



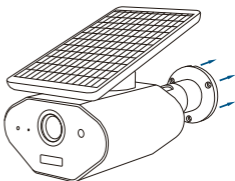
Name Description

Reset Key	The device in the working status, then press and hold for 5 seconds to restore the factory settings.
Micro SD slot	Install Micro SD card to support local recording
Battery Switch	Turn off and turn on the device battery by turning on the key
USB Interface	Charge the device battery through the USB interface
Bracket mounting	Mounting on the wall using the accessory bracket
Speaker	Issue system prompts and implement voice intercom

i Note: You need to detach the bottom silicone to see the function interface as shown.

Installation

Operate as shown, using mounting screws. Install the bracket and adjust the angle to make the PIR Enough to detect people .



Installation Notes

Installation: 1. The human body induction effective distance is 3-5 meters, so please adjust the monitoring angle according to the actual situation.

2. Please avoid the installation position where the temperature changes too much, such as heat source, airoutlet, etc. it will cause false alarm of equipment.

Alarm adjustment: The device default setting triggers the alarm immediately. If you need to adjust the sensitivity, please go to the device settings page.

Solar panels: Please ensure that the sun is fully exposed.

Connect

Download the Tellur Smart App for both iOS and Android OS. Scan the QR code to download Tellur Smart App

Support



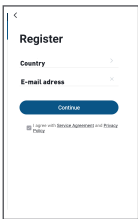
iOS



Android

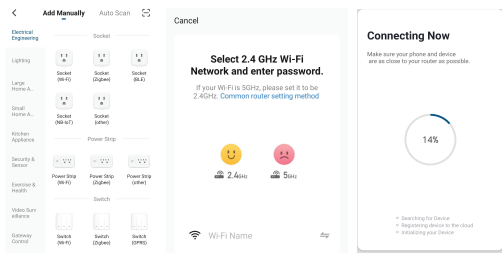


Download App(iOS&android)



Adding a New Device

- Turn on power of device being paired and make sure light is flashing quickly.
- Open App and Click "+" to add appropriate device.
- Select WiFi network and input password of WiFi then.
- Once connected the App will prompt the connection, then you can rename the device or just click "done".



- Once App is installed on your device and you have added your smart device to your app you will be able to control it.

QR Code Configuration

Getting started

1. Please follow the instructions and make sure the passwords are inputted correctly.
2. One device can only be added with one App account, if the device has been added with another account already, then it can't be added to any another account again.
3. The device will be unbind from previous account after been deleted from App. Further, the device will be resetted automatically once from blue light to red light

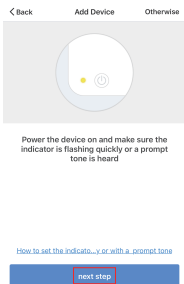
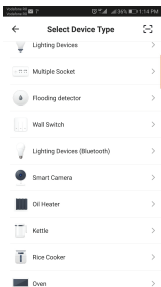
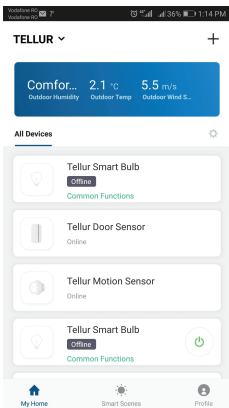
Process

Step 1.

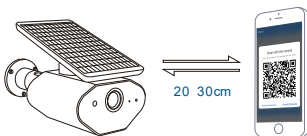
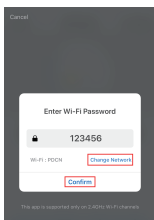
Open the Tellur Smart App, click "+" or "Add Device".

Step 2.

Select "Smart Camera". Power the device on and make sure the indicator is flashing quickly or a prompt tone is heard.



Step 3. Input WiFi passwords and click "Confirm", scan the QR Code with a device. (You can change the network connection)



Technical Specification

Sensor type: 1/4" CMOS
Sensor resolution: 1.3 Megapixels
Lens: F:1.4 f:2.8mm
View angle 143°
Infrared sensor: Yes, up to 10 meters
Image resolution: HD 960P 1280*960
Video compression: H.264
Bit rate: 32Kbps~2Mbps
Frame rate: 1~25/second
Internal storage: MicroSD card (up to 32GB)
Night vision: Yes
Motion detection: Yes
Audio communication: Two-way audio
Waterproof IP65
WiFi standard: IEEE 802.11b/g/n
Supported WiFi network: 2.4GHz
Battery: 3.7V, 6400mAh Li-ion Rechargeable
Dimensions: 210*75*89MM
Weight: 480g

Declaration of conformity

We, ABN SYSTEMS INTERNATIONAL S.R.L., Bucharest, Sector 1, Marinariilor street, nr. 31, we declare on our own responsibility that the product below:

Product description: WiFi Smart Outdoor Solar Camera

Brand: Tellur

Product code: TLL331111

It does not endanger life, health, work safety, does not have a negative impact on the environment and corresponds to the standards stated in the manufacturer's declaration of conformity. The product is in compliance with the following standards and / or other normative documents:

RED – 2014/53/EU

Applied standards:

EMC: ETSI EN 301 489-1 V2.2.0

ETSI EN 301 489-17 V3.2.0

Radio: ETSI EN 300 328 V2.1.1 (2016-11)

ETSI EN 300 220-1 v2.4.1

ETSI EN 300 220-2 v2.4.1

Health: EN 62479:2010

Safety: EN 60950-1:2006+A11:2009+A1:2010+A12:2011+A2:2013

RoHS – 2011/65/EU

The product bears CE mark, applied in 2019

Name: George Barbu
Function: Director General

Place and date: Bucuresti, 20-06-2019
Signature: