



Wi Fi Switch

Instalation Guide



EU

INTO YOUR FUTURE

Installation Wiring Diagram

1.Remove the panel with screwdriver

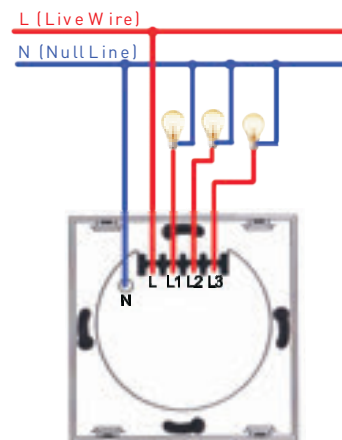


(Note: Installation without electricity power on)

2. Prepare to install wiring

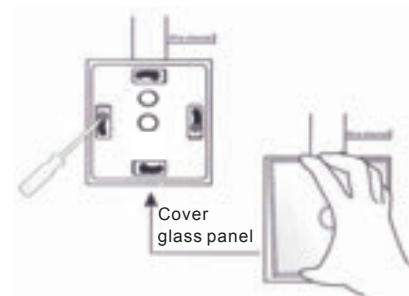
A: Live wire connects " L " terminal
B: Lamp wire connects "L1,L2,L3" terminal

1 gang connects "L1" terminal
2 gang connects "L1,L2" terminal
3 gang connects "L1,L2,L3 terminal"



3. Fix the switch into the wall

A: Put the switch into the switch box from the wall
B: Mount the two screws
C: Install the glass panel (install from top to bottom)
D: Turn on electricity. LED light will flash quickly and switch will enter standby mode



Installation Notes

1. It will be best if the installation would be performed by a professional electrician. Before installation, turn off the electricity!
2. The switch must be connected with null line, and live wire of controlles light. (Ground line is optional, if without, do not need it.)
3. How to distinguish between null line, live wire of controlled light and ground line
(Note: If there is no null line in your house, you should add a null line. Use the test pen to identify the type of wire: if the light of the test pen lights up, it is a live wire. Otherwise, it is a null line.)
In your original wall switch, use the test pen to identify the type of wire: if the light is off, it is a live wire of controlled light (L1,L2,L3). Otherwise, it is a Live wire (L GND line is double coloured: yellow and green).
4. The panel is glass. Please operate with caution.