









Gravity CMH20 car phone holder TLL171211

-  User manual
-  Manual de utilizare
-  Manual del usuario
-  Manuel d'utilisation
-  Manuale d'uso
-  Benutzerhandbuch

A silhouette of a city skyline with various skyscrapers of different heights and shapes, set against a dark background.

INTO YOUR FUTURE

Technical specs

Material: Aluminium alloy, ABS

Compatibility: 4.7" - 6.7"

Characteristics: Easy one-hand Operation, safe clamping, suitable for most air vents, silicone pad protection

Installation: Air vent or dashboard

Dimensions: 120x100x130mm

Weight: 115g

Color: Black

Package includes:

1 x CMH20 car phone holder

1 x Car Air Vent Clip

1 x Adhesive support

1 x Manual

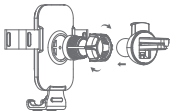
Instructions

1. The car phone holder can be installed on all flat surfaces of the car or into most air vents.

a. Dashboard installation: Rotate the screw nut until it is loose enough to allow the adhesive support to be inserted into the back of the holder. Insert the support, adjust it to the wanted position and then firmly screw the nut. Remove the adhesive protective film and place the phone holder on the dashboard.

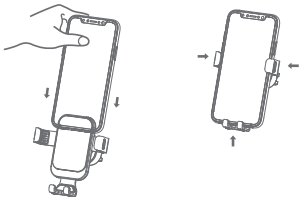
NOTE: The flat surface on which the support is to be mounted on must be clean and dry, otherwise, the use effect of the base may not be ideal.

b. Air Vent installation: Rotate the screw nut until it is loose enough to allow the car air vent clip to be inserted into the back of the holder. Insert the clip, adjust it to the wanted position and then firmly screw the nut.



2. Once the holder is mounted on your car's dashboard or in the air vent, slide your phone into the gripping arms of the holder and let the weight of your phone pull it down and lock it into place.

This car phone mount adopts the design of gravity retractable clip. When mobile phone is placed on the bottom tray, the clip will be triggered to firmly grab the phone.





The crossed-out wheeled-bin symbol on your product, battery, literature or packaging reminds you that all electronic products and batteries must be taken to separate waste collection points at the end of their working lives; they must not be disposed of in the normal waste stream with household garbage.

It is the responsibility of the user to dispose of the equipment using a designated collection point or service for separate recycling of waste electrical and electronic equipment (WEEE) and batteries according to local laws.

Proper collection and recycling of your equipment helps ensure EEE waste is recycled in a manner that conserves valuable materials and protects human health and the environment, improper handling, accidental breakage, damage, and/or improper recycling at the end of its life may be harmful for health and environment.