



# TELLUR GREEN

## Presentation

INTO YOUR GREEN FUTURE



# A better planet

The products we sell are manufactured in a responsible and ethical manner and comply with the regulations in each of our markets.

TELLUR is constantly developing new products. Our environmentally friendly concept will expand every year, continuously offering more options for sustainable electronic products.

We are partners with “Plantam fapte bune in Romania” and 1% of the revenues is donated to support the forests



**PLANTĂM**  
**FAPTE BUNE**  
**ÎN ROMÂNIA**

# Type-C to MFI Lightning cable

- ✓ Fast Charge, Fast Data Transfer
- ✓ MFI Certified Lightning to Type C
- ✓ 3A
- ✓ PD 60W



[TLL155461](#)



- ✓ ECO product made out of 96% Recycled Nylon
- ✓ Anti-break construction. High elasticity, resistance to bending
- ✓ Fast charge 3A and data transfer for Apple products
- ✓ MFI certified, fully compatible with Apple devices

Made for  
 iPhone | iPad | iPod

 **TELLUR GREEN**

# USB to MFI Lightning cable

- ✓ Fast Charge
- ✓ Fast Data Transfer
- ✓ Lightning to USB
- ✓ 2.4 A



Made for  
 iPhone | iPad | iPod

[TLL155481](#)



- ✓ ECO product made out of 96% Recycled Nylon
- ✓ Anti-break construction. High elasticity, resistance to bending
- ✓ Fast charge 2.4 A and data transfer for Apple products
- ✓ MFI certified, fully compatible with Apple devices

 **TELLUR GREEN**

# Type-C to Type-C cable

- ✓ Fast Charge
- ✓ Fast Data Transfer
- ✓ Type-C to Type C
  - ✓ 3A
  - ✓ PD 60W



[TLL155471](#)



- ✓ ECO product made out of 96% Recycled Nylon
- ✓ Anti-break construction. High elasticity, resistance to bending
- ✓ Fast charge 3A and data transfer for Type-C compatible devices
- ✓ Data transfer at max speed of 480 Mbps.

# USB to Type-C cable

- ✓ Fast Charge
- ✓ Fast Data Transfer
- ✓ USB to Type C
- ✓ 3A
- ✓ 480 Mbps



[TLL155491](#)

- ✓ ECO product made out of 96% Recycled Nylon
- ✓ Anti-break construction. High elasticity, resistance to bending
- ✓ Fast charge 3A and data transfer for Type-C compatible devices
- ✓ Data transfer at max speed of 480 Mbps.



# Wheat Straw

Wheat straw is a by-product of growing wheat grains.

It is the dried plant residue left behind after harvesting the grain.

Although ordinary straw is largely a waste, people have in the past found uses for the remaining straw, such as animal feed, bedding, and even the raw material of consumer goods.

Using wheat straw material, we divert material from the waste stream and use a reclaimed resource to make durable, lightweight electronics.

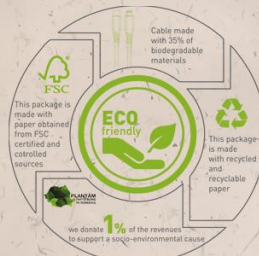


# Type-C to Lightning cable

- ✓ Lightning to Type-C
- ✓ Fast Charge
- ✓ Fast Data Transfer



[TLL155451](#)



- ✓ ECO product made out of wheat straw fiber ( PLA + PBAT )
- ✓ Data transfer with Type C and Lightning for Apple devices.
- ✓ Fast charge for Apple devices
- ✓ Braided fiber cable, resistant, flexible.



# Type-C to Type-C cable

- ✓ ECO product made out of wheat straw fiber ( PLA + PBAT )
- ✓ Fast charge & fast data transfer for Type C compatible devices
- ✓ Braided fiber cable, resistant, flexible.



- ✓ Fast Transfer
- ✓ Fast Charge
- ✓ 3A
- ✓ PD 60W



[TLL155441](#)



# 38W Dual-Port PD Wall Charger (PD 20W + QC3.0 18W)

- ✓ Wall Charger
- ✓ Dual Port
- ✓ Type-C
- ✓ USB
- ✓ 38W



[TLL151321](#)



- ✓ Made of ECO materials: 35% wheat straw fiber and 65% ABS
- ✓ Dual-port: Type-C (PD 20W) & USB (QC3.0 18W)
- ✓ Protection systems for short circuit, overcurrent, overvoltage and overtemperature



# PD Car Charger

- ✓ ECO product made out of 35% wheat straw fiber and 65% ABS
- ✓ Dual-port: Type-C (PD 18W) & USB (QC3.0 18W)
- ✓ Protection systems for short circuit, overcurrent, overvoltage and overtemperature



- ✓ Dual port
- ✓ Type-C
- ✓ 36W

[TLL151341](#)



# Bluetooth Speaker 3W

- ✓ Portable
- ✓ Sound
- ✓ 3W



[TLL161231](#)



- ✓ ECO product made out of 35% wheat straw fiber and 65% ABS
- ✓ It connects to any device that benefits from bluetooth technology
- ✓ It can be operated from a distance of 10 meters
- ✓ Playing time of up to 2 hours



# Qi Wireless Fast Desk Charger 15W

- ✓ Made of ECO materials: 35 % wheat straw fiber and 65 % ABS
- ✓ Up to 15 W charging power
- ✓ Automatically adapts to any smartphone Qi
- ✓ Overvoltage safety protection, temperature control and foreign object detection



- ✓ Wireless charger
- ✓ Fast Charge
- ✓ Desk Charger
- ✓ 15W



[TLL151311](#)

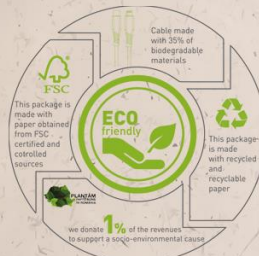


# Bluetooth Over-Ear Headphones Pulse



[TLL511441](#)

- ✓ Foldable
- ✓ Powerful sound
- ✓ ECO
- ✓ Wireless.



- ✓ Fast and easy pairing with your Bluetooth enabled devices
- ✓ Simple, lightweight, comfortable design and made out of ECO materials (35% wheat straw fiber and 65% ABS)
- ✓ Clear, powerful, balanced sound for your music and movies



- ✓ Integrated microphone for hands-free calls



# Power Bank 10000mAh, 2xQC3.0 + PD 18W

- ✓ Made of ECO materials: 35% wheat straw fiber and 65% ABS
- ✓ Two QC 3.0 USB an the Type-C PD 3.0 ports helps you to quickly charge 3 devices



- ✓ Digital display accurately shows battery level
- ✓ Fast charges your compatible iPhone from 0% to 50% in up to 30 minutes - when used with an MFi Type-C to Lightning cable (not included)



- ✓ ECO Green Super Power
- ✓ Fast charge
- ✓ Power
- ✓ Safe
- ✓ Ecological



[TLL158331](https://www.tellurgreen.com)





**THANK YOU!**

For more products, please  
visit : [tellur.com](https://tellur.com).