



Fast Wireless Charger User Manual

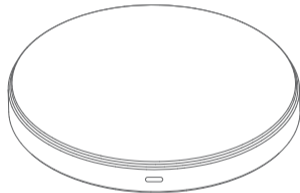


INTO YOUR FUTURE

Thanks for choosing us!

This is a smart phone wireless charger that allows you enjoy the fun of digital products easily.

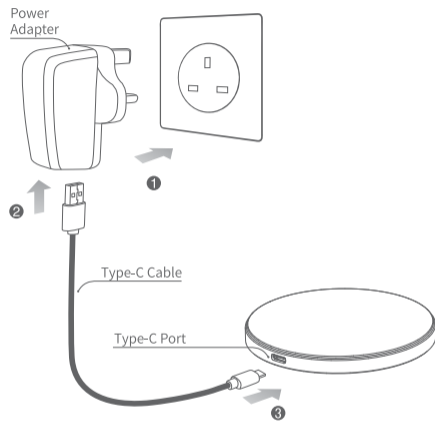
Please kindly read the user manual before using and keep it for future reference.



Specification

Input: DC5V, 2.0A DC9V, 1.67A	Charging Distance: ≤10mm
Frequency: 110~205KHZ	Conversion: ≥72%
Dimensions: Φ90 x 9.5mm	N.W.: 95g

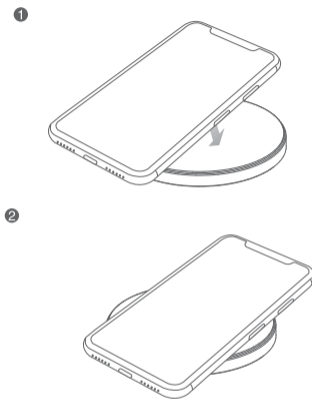
Connect to Power Adapter



- ① Connect the power adapter to socket.
- ② Using the cable included, connect the USB Type-A interface to the adapter and the Type-C port to pad.
- ③ The standby indicator light is green.

Note: Min. QC2.0 fast charger adapter required for fast wireless charging (not included). This product also works with USB Type-C to Type-C charging cable.

Charging Mode



- ① Make sure the charging pad is connected to the power supply.
- ② Place the Qi enabled phone properly on the transmitter, the indicator light become blue and will start charging. The device will enter standby mode when the phone is removed from the charging pad.

Note: When Samsung phones, with built-in wireless charging function, gets fully charged, if the phone is not moved in a long time, the battery power will be kept in fully charged status.

Notes

1. Do not disassemble or throw into fire or water, to avoid causing a short circuit.
2. Do not use wireless charger in severely hot, humid or corrosive environments.
3. Do not place too close to objects with magnetic stripe or chip (ID card, bank cards etc.) to avoid demagnetization.
4. Please keep a distance at least of 20 cm between implantable medical devices (pacemakers, implantable devices etc.) and the wireless charger, to avoid potential interference.
5. This product is not a toy, please keep it away from children to avoid unnecessary accidents.

The images from this manual are sketch maps, used for illustrating the instructions. The packet includes: wireless charger, power cable, user's manual.

Disposal and recycling information

The crossed-out wheeled-bin symbol on your product, battery, literature or packaging reminds you that all electronic products and batteries must be taken to separate waste collection points at the end of their working lives; they must not be disposed of in the normal waste stream with household garbage. It is the responsibility of the user to dispose of the equipment using a designated collection point or service for separate recycling of waste electrical and electronic equipment (WEEE) and batteries according to local laws. Proper collection and recycling of your equipment helps ensure EEE waste is recycled in a manner that conserves valuable materials and protects human health and the environment, improper handling, accidental breakage, damage, and/or improper recycling at the end of its life may be harmful for health and environment.

We, ABN SYSTEMS INTERNATIONAL S.R.L., Bucharest, Sector 1, Marinariilor street, no. 31, declare on own responsibility that this product does not endanger life, health, work safety, does not have a negative impact on the environment and corresponds to the standards stated in the manufacturer's declaration of conformity.

The product is made in compliance with the RED – 2014/53/EU

Applied standards:
 EN 60950-1:2006 +A2:2013 [Safety]
 EN 62311:2018 [Health]
 EN 301 489-1 V2.2.0 [2017-03] [EMC]
 EN 301 489-3 V2.1.1 [2017-03] [EMC]
 EN 303 417 V1.1.1 [2017-06] [Radio]
 RoHS – 2011/65/EU

The product bears CE mark applied in 20

